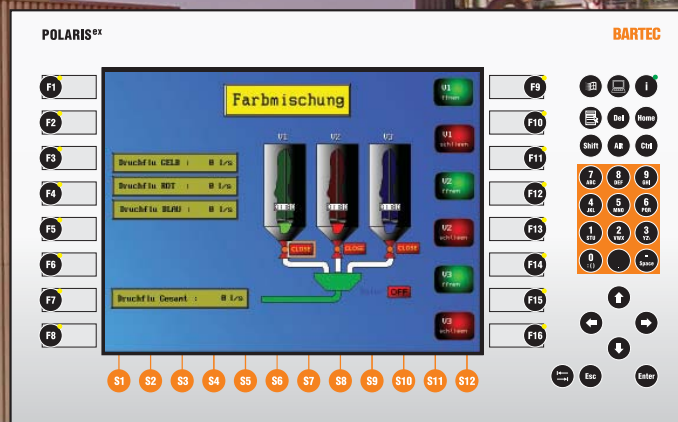
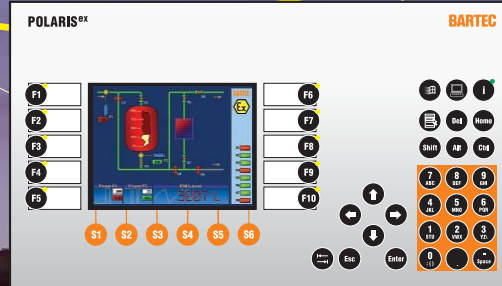


NOW with LED Technology!



# POLARIS

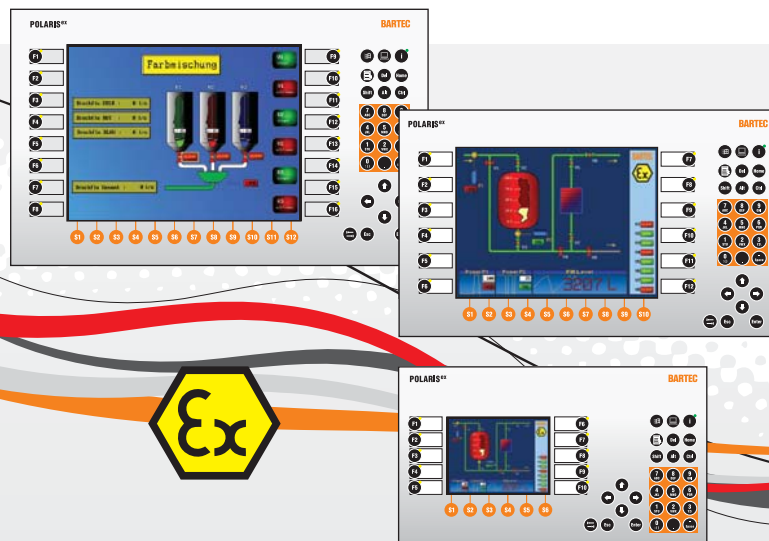
**POLARIS Touch Panel PCs**

LED Technology

**New POLARIS series with Touch Panel PC and LED technology**

Thanks to its innovative devices and system solutions, Bartec ranks among the world's top suppliers of visualisation technology.

Our consistent product maintenance and further development enables us to produce more and more new innovative solutions for new fields of application and for greater convenience and safety. Accordingly, we have further optimised our well-known and successful POLARIS Panel PC and equipped it with touchscreen and LED technology.



The new POLARIS Touch Panel PC series is ideally equipped for use in the chemical, petrochemical and pharmaceutical industries. Using pioneering technology, POLARIS offers the utmost in comfort and safety in hazardous areas, both in Zone 1 + 2 and also in Zone 21 + 22.

**First-rate display**

Even with large viewing angles, the displays offer first-class contrast, which is ensured by high-resolution display technology and LED backlighting. This LED technology guarantees a long service life for the panel.

**Comfortable operation**

A touchscreen is standard in all new POLARIS series devices. Operation is intuitive and therefore easy and convenient. The high-resolution displays with LED backlighting offer greater reliability in reading and recognition, even in poor lighting conditions.

**High-performance processors**

Intel Atom with 1.6 GHz and Windows® 7 Embedded are available as options with the new POLARIS series.

**POLARIS Touch Panel PCs****■ 3 POLARIS display sizes**

You have a choice of 3 display sizes: POLARIS 5.7", POLARIS 10.4" and POLARIS 12.1".

The new touch panel PC is used as a HMI (Human Machine Interface) for controlling and monitoring machines comfortably:

- simple machines: mixers, dryers, fuel-filling stations
- complex machines: reactors, centrifuges, ball mills.

**■ BMS Graf pro 7 Software**

The new visualisation software BMS Graf pro 7 from BARTEC is the programming package for the POLARIS Embedded and Professional series. The Ethernet interface facilitates a connection through Modbus TCP.

**■ New features**

- LED technology
- Higher screen resolution
- Touchscreen
- User administration
- Connection through Ethernet (Modbus TCP)

The familiar POLARIS Panel PCs, which have proven their worth over years, are still available.



The new visualisation software BMS Graf pro 7 makes the process visualisation more easier:

- intuitive operation
- comfortable handling

POLARIS is available to you not only as a standard version but also as a solution specially developed to suit your needs. Just ask us!

**POLARIS. Brilliant, comfortable, wireless.**

BARTEC protects  
people and  
the environment  
by the safety

of components,  
systems  
and plants.

